

E L E G A N C E I N A N Y S E T T I N G



Woodard
2008 Design Guide

DESIGN GUIDE



FAUX LEATHERS

Faux leather fabrics are appropriate for either indoor or outdoor use. Constructed primarily of a polyurethane surface with reinforced rayon backing, these fabrics are designed to stay soft and supple in all weather conditions. The result is a fabric with color consistency, scratch, nick and blemish resistance and excellent colorfastness. Faux leathers are resistant to mildew, rot and ultra-violet rays, and are easily cleaned with mild soap and water.

Page 4

ACRYLIC JACQUARDS, BOUCLES, CHENILLES, LINENS, MATLASSES & SUNBRELLA®

Acrylic and Sunbrella fabrics are appropriate for either indoor or outdoor use. Constructed primarily of acrylic yarn, these fabrics are either solution-dyed or printed. The result is a fabric that offers vibrancy of color and softness of hand like fine cotton fabrics with all the weather and stain resistance of acrylic fabrics. Acrylic and Sunbrella fabrics are resistant to mildew, rot and ultra-violet rays, and are easily cleaned with soap and water.

Pages 4-6

ACRYLIC PRINTS

Acrylic prints are appropriate for either indoor or outdoor use. Constructed primarily of acrylic yarn, these fabrics are printed. The result is a fabric that offers vibrancy of color and softness of hand like fine cotton fabrics with all the weather and stain resistance of acrylic prints. Acrylic prints are resistant to mildew, rot, and ultra-violet rays, and are easily cleaned with soap and water.

Pages 4, 6

ACRYLIC & SUNBRELLA® STRIPES

Acrylic and Sunbrella stripes are appropriate for either indoor or outdoor use. Constructed primarily of acrylic yarn, these fabrics are either solution-dyed or printed. The result is a fabric that offers vibrancy of color and softness of hand like fine cotton fabrics with all the weather and stain resistance of acrylic fabrics. Acrylic and Sunbrella stripes are resistant to mildew, rot, and ultra-violet rays, and are easily cleaned with soap and water.

Pages 4, 7

SUNBRELLA® DOBBIES & SOLIDS

Sunbrella dobbies and solids are appropriate for either indoor or outdoor use. Constructed of 100% acrylic yarn, these fabrics are solution-dyed. The result is a fabric that offers vibrancy of color and softness of hand like fine cotton fabrics, with all the weather and stain resistance of acrylic fabrics. Sunbrella dobbies and solids are resistant to mildew, rot, and ultra-violet rays, and are easily cleaned with soap and water.

Pages 8-9

ACRYLIC/POLY JACQUARDS

Acrylic/Poly jacquards are appropriate for either indoor or outdoor use. Constructed of acrylic and polyester, these fabrics are woven to create attractive jacquard patterns that are exceptionally strong for both sling and cushion use. Acrylic/Poly jacquards can be easily cleaned with soap and water, and are mildew and tear-resistant.

Page 9



OLEFIN DOBBIES, JACQUARDS & STRIPES

Olefin fabrics are appropriate for either indoor or outdoor use. Constructed of olefin, these fabrics are woven to create attractive jacquard patterns that are exceptionally strong for both sling and cushion use. Olefin fabrics can be easily cleaned with soap and water, and are mildew and tear-resistant.

Page 9

POLY/OLEFIN JACQUARDS

Poly/Olefin fabrics are appropriate for either indoor or outdoor use. Constructed of polyester and olefin, these fabrics are woven to create attractive jacquard patterns that are exceptionally strong for both sling and cushion use. Poly/Olefin fabrics can be easily cleaned with soap and water, and are mildew and tear-resistant.

Page 10

PVC/ACRYLIC JACQUARDS, DOBBIES, SOLIDS & SUNBRELLA SLING®

PVC/Acrylic and Sunbrella Sling fabrics are appropriate for either indoor or outdoor use. Constructed of PVC-coated polyester yarn combined with the finest acrylic yarn, these fabrics are woven to create attractive patterns that are exceptionally strong for both sling and cushion use. Fabrics can be easily cleaned with soap and water, and are mildew and tear-resistant.

Page 11



PVC/OLEFIN JACQUARDS

PVC/Olefin fabrics are appropriate for either indoor or outdoor use. Constructed of PVC-coated polyester yarn combined with the finest olefin yarn, these fabrics are woven to create attractive jacquard patterns that are exceptionally strong for both sling and cushion use. PVC/Olefin fabrics can be easily cleaned with soap and water, and are mildew and tear-resistant.

Page 12

PVC/RELAXES & WICKER WEAVES

PVC relaxes and wicker weaves are specifically designed for outdoor sling application. PVC-coated polyester yarn is woven in an open-weave pattern. PVC fabric weaves can be easily cleaned with soap and water, and are mildew and tear-resistant.

Pages 12-13

PVC DOBBIES & JACQUARDS

PVC dobbies and jacquards are specifically designed for outdoor use. PVC-coated polyester yarn is woven in a mesh construction to provide breathable comfort and high strength in slings and cushions, with a 75% shade factor in umbrellas. PVC fabrics can be easily cleaned with soap and water, and are mildew and tear-resistant.

Page 13

PVC SOLIDS & STRIPES

PVC solids and stripes are specifically designed for outdoor use. PVC-coated polyester yarn is woven in a mesh construction to provide breathable comfort and high strength in slings and cushions. Most PVC stripes and solids have a 75% shade factor in umbrellas. PVC fabrics can be easily cleaned with soap and water, and are mildew and tear-resistant.

Page 13



PVC/TASLANS

PVC/Taslan fabrics are specifically designed for outdoor use. Constructed of PVC-coated polyester yarn combined with the finest Taslan-Boucle type yarn, these fabrics provide breathable comfort and high strength in slings and cushions. PVC/Taslan fabrics can be easily cleaned with soap and water, and are mildew and tear-resistant.

Page 13

CORDS, FRINGE & CHAIR TIES

Woodard offers the perfect finishing touches with a variety of cords, fringe and chair ties to coordinate with your cushions. These items are appropriate for either indoor or outdoor use and are resistant to mildew, rot and ultra-violet rays, and are easily cleaned with soap and water.

Page 14-15

FRAME FINISHES

Woodard's unique finish systems ensure years of carefree enjoyment of your fine furniture. Each frame is finished with a polyester powder coat that is electrostatically applied and oven-baked, offering the most durable finish available in the industry.

Pages 16-17



STRAP COLORS & WOODARD WICKER

Woodard straps and wicker finishes are available in an exciting array of colors and textures. The straps and wicker finishes contain UV stabilizers, and can be easily cleaned with a mild detergent and warm water.

Pages 18-19

CARE INSTRUCTIONS

Proper care for your fine Woodard furniture is essential to ensure years of enjoyment. Suggested cleaning and maintenance instructions are provided, detailing proper care for Woodard fabrics, finishes, vinyl straps and table tops.

Page 20

FABRIC GUIDE

Each of Woodard's fine fabrics is detailed, describing its fabric grade, cushion welt color, umbrella binding color and frame type suitability.

Pages 21-23

All of the colors presented here are as accurate as photography and printing processes allow. Actual fabric, finish and strap samples may be obtained through your sales representative.

DESIGNER FABRICS

FAUX LEATHERS



20T Brisa Distressed - Lasso
Faux Leather-Grade E



21T Brisa Distressed - Chaps
Faux Leather-Grade E

ACRYLIC JACQUARDS, CHENILLES & BOUCLES



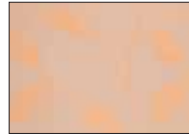
05T Isfant Borgo - Pumpkin
Acrylic Jacquard-Grade E
Coord. 07T



07T Multicolor Borgo - Pumpkin
Acrylic Jacquard-Grade E
Coord. 05T



01T Senales Borgo - Pumpkin
Boucle Jacquard-Grade E
Coord. 16T



12T Misciu - Pumpkin
Acrylic Jacquard-Grade E
Coord. 16T



11T Misciu - Oatmeal/Taupe
Acrylic Jacquard-Grade E
Coord. 15T



16T Karnak Borgo - Pumpkin
Chenille Stripe-Grade E
Coord. 01T, 12T



15T Karnak Borgo - Oatmeal/Taupe
Chenille Stripe-Grade E
Coord. 11T



02T Senales Borgo - Milk Chocolate
Boucle Jacquard-Grade E
Coord. 08T



08T Carei - Milk Chocolate
Boucle Solid-Grade E
Coord. 02T



90T Ultrawave
Acrylic Jacquard-Grade E

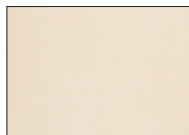
ACRYLIC PRINTS, STRIPES & SOLIDS



39T Yatchman - Maple
Acrylic Print-Grade E
Coord. 38T



41T Tropicale - Black
Acrylic Stripe-Grade E

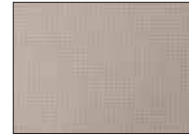


38T Lazy Day - Natural
Acrylic Solid-Grade E

ACRYLIC JACQUARDS, CHENILLES, LINENS, MATHASSES & SUNBRELLA®



07R Silhouette - Seaside
Sunbrella Jacquard-Grade D
Coord. 46C



42C Ibesen - Bluemist
Sunbrella Jacquard-Grade C
Coord. 40C, 79S



72S Chenillela - Spa
Sunbrella Chenille-Grade D
Coord. 08A, 31A, 76S



40C Cambridge - Cocoa
Sunbrella Jacquard-Grade C
Coord. 42C, 79S



18R Cozumel - Walnut
Sunbrella Jacquard-Grade D
Coord. 74H



70Y Kittrell - Onyx
Sunbrella Jacquard-Grade D
Coord. 18A



11R Kennedy - Chestnut
Sunbrella Jacquard-Grade D
Coord. 20C, 69S, 74S, 79S



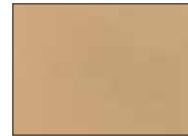
64S Napa Spice
Sunbrella Jacquard-Grade D



23R Vanderbilt - Wheat
Sunbrella Jacquard-Grade D
Coord. 48A, 49A, 73H



17R Cozumel - Nugget
Sunbrella Jacquard-Grade D
Coord. 48A, 49A, 67S



67S Sultan - Camel
Sunbrella Jacquard-Grade D
Coord. 17R, 24A, 77S



77S Barkley - Harvest
Sunbrella Jacquard-Grade D
Coord. 24A, 67S



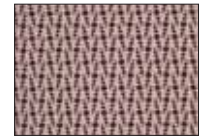
79S Viola Chestnut
Sunbrella Chenille-Grade D
Coord. 11R, 40C, 42C,



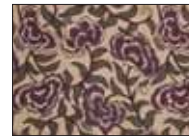
76S Venezia II - Seaspray
Sunbrella Jacquard-Grade D
Coord. 31A, 72S



25R Martini - Raisin
Sunbrella Jacquard-Grade D
Coord. 87S, 88S



10R Iota - Raisin
Sunbrella Jacquard-Grade D
Coord. 87S, 88S



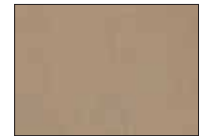
86S Brevard - Concord
Sunbrella Jacquard-Grade D
Coord. 87S, 88S



15R Marsilea - Sunrise
Sunbrella Jacquard-Grade D
Coord. 88S



20R Marion - Blush
Sunbrella Jacquard-Grade C
Coord. 88S



84S Soft Texture
Acrylic Jacquard-Grade D



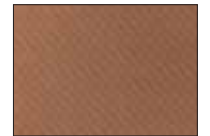
80S Batik - Henna
Sunbrella Jacquard-Grade D
Coord. 02S, 23A, 46S



02S Melrose - Chili
Sunbrella Jacquard-Grade D
Coord. 23A, 46S, 61S, 80S



23A Linen Chili
Sunbrella Linen-Grade B
Coord. 02S, 46S, 61S, 80S



46S Bingata - Henna
Sunbrella Jacquard-Grade D
Coord. 02S, 23A, 61S, 80S

ACRYLIC JACQUARDS, CHENILLES, LINENS, MATLASSES & SUNBRELLA®, continued



74S JR Kyoto - Bark
Sunbrella Matlasse-Grade D
Coord. 11R

68S Sultan - Medina
Sunbrella Jacquard-Grade D

61S Kieran Spice
Sunbrella Jacquard-Grade C
Coord. 02S, 23A, 46S

65S Siam - Clove
Sunbrella Jacquard-Grade D
Coord. 47S, 53S



53S Indochime - Clove
Sunbrella Jacquard-Grade D
Coord. 47S, 65S

47S Burma - Clove
Sunbrella Jacquard-Grade D
Coord. 53S, 65S

45S Puddles - Mushroom
Sunbrella Jacquard-Grade D
Coord. 16C, 30C, 37S

30C Top Coat - Wren
Sunbrella Jacquard-Grade C
Coord. 16C, 37S, 45S



48S Cello - Tusk
Sunbrella Chenille-Grade D
Coord. 33S

33S Cortez Cypress
Sunbrella Jacquard-Grade D
Coord. 48S

69S Viola - Malt
Sunbrella Chenille-Grade D
Coord. 11R, 30S

30S Borneo - Cocoa
Sunbrella Jacquard-Grade D
Coord. 69S



20S Tropical - Opal
Sunbrella Jacquard-Grade D
Coord. 17S, 18S, 19S, 52S

15C Boheme - Sand
Sunbrella Jacquard-Grade C
Coord. 17C, 29P

48C Pasha - Pecan
Acrylic Jacquard-Grade D

10C Top Coat - Barley
Sunbrella Jacquard-Grade C
Coord. 10M, 12M, 18C

ACRYLIC PRINTS



71S Mesh Impressions - Meadow
Acrylic Print-Grade D
Coord. 55S

55S Screened In - Meadow
Acrylic Print-Grade D
Coord. 71S

50S Mesh Impressions - Forest
Acrylic Print-Grade D

37S Paradise Palm
Acrylic Print-Grade D
Coord. 16C, 30C, 45S



39S Terra Ceia
Acrylic Print-Grade D

Scale: 1" = 12"

ACRYLIC & SUNBRELLA® STRIPES

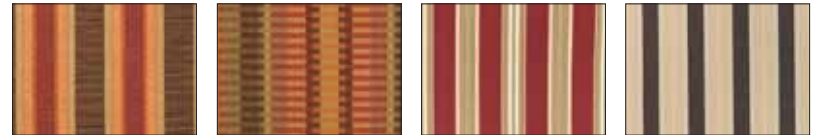


49A Abacos - Straw
Sunbrella Stripe-Grade D
Coord. 17R, 23R, 48A

48A Abacos - Barley
Sunbrella Stripe-Grade D
Coord. 17R, 23R, 49A

30R Wolcott - Beige
Sunbrella Stripe-Grade C
Coord. 44C, 77C

24A Overture - Spice
Sunbrella Stripe-Grade C
Coord. 67S

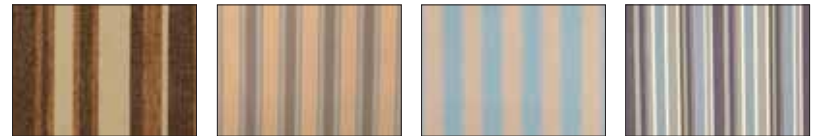


72A Dimone - Sequoia
Sunbrella Stripe-Grade C
Coord. 30A

62A Zanzibar - Salsa
Sunbrella Stripe-Grade D
Coord. 44C

03A Padgentville - Lacquar
Acrylic Stripe-Grade B

18A Davidson - Walnut
Sunbrella Stripe-Grade B
Coord. 70Y



35A Teton - Willow
Sunbrella Stripe-Grade D
Coord. 19S

08A Gulfport - Barley
Sunbrella Stripe-Grade B

31A Simpson - Seaspray
Sunbrella Stripe-Grade B
Coord. 72S, 76S

05A Brannon - Whisper
Sunbrella Stripe-Grade B
Coord. 01Y

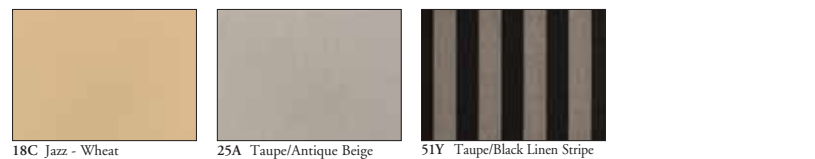


14C Jazz - Buttercup
Sunbrella Jacquard Stripe-Grade C

19C Jazz - Parrott
Sunbrella Jacquard Stripe-Grade C

16C Jazz - Mushroom
Sunbrella Jacquard Stripe-Grade C
Coord. 39C, 37S, 45S

17C Jazz - Parchment
Sunbrella Jacquard Stripe-Grade C
Coord. 19C, 29P



18C Jazz - Wheat
Sunbrella Jacquard Stripe-Grade C
Coord. 10C, 10M, 12M

25A Taupe/Antique Beige
Sunbrella Stripe-Grade C

51Y Taupe/Black Linen Stripe
Sunbrella Stripe-Grade B

Scale: 1" = 12"

SUNBRELLA® DOBBIES & SOLIDS



65C Limelight - Leaf
Sunbrella Dobby-Grade D
Coord. 56Y, 71Y



56Y Canvas - Parrot
Sunbrella Solid-Grade B
Coord. 65C, 71Y



71Y Canvas - Fern
Sunbrella Solid-Grade B
Coord. 56Y, 65C



35C Murchison - Palm
Sunbrella Dobby-Grade D
Coord. 13H



46C Quadrant Sage
Sunbrella Dobby-Grade C
Coord. 07R



87S Velvet - Plum
Sunbrella Solid-Grade D
Coord. 10R, 25R, 86S



88S Velvet - Antique Beige
Sunbrella Solid-Grade D
Coord. 10R, 15R, 20R, 25R, 86S



01Y Canvas - Spa
Sunbrella Solid-Grade B
Coord. 05A



78S Blake - Wheat
Sunbrella Dobby-Grade D



17S Litchfield - Vellum
Sunbrella Solid-Grade D
Coord. 20S



18S Litchfield - Bamboo
Sunbrella Solid-Grade D
Coord. 20S



19S Litchfield - Willow
Sunbrella Solid-Grade D
Coord. 20S, 35A, 52S



52S Amara - Opal
Sunbrella Dobby-Grade D
Coord. 19S, 20S



29P Dots Nice - Stone
Sunbrella Dobby-Grade B
Coord. 15C, 17C



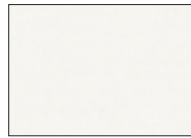
20C Fife - Bark
Sunbrella Dobby-Grade C
Coord. 11R



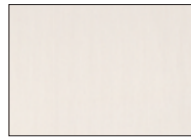
25C Flagship - Pecan
Sunbrella Dobby-Grade C



59S Canyon - Bamboo
Sunbrella Dobby-Grade D



10Y Natural
Sunbrella Solid-Grade B



14Y Bird's Eye Canvas
Sunbrella Solid-Grade B



77C Trax - Wren
Sunbrella Dobby-Grade D
Coord. 30R



12Y Antique Beige
Sunbrella Solid-Grade B



27Y Heather Beige
Sunbrella Solid-Grade B



40Y Antique Beige Linen
Sunbrella Solid-Grade B



62Y Champagne Linen
Sunbrella Dobby-Grade B

SUNBRELLA® DOBBIES & SOLIDS, continued



05Y Linen - Sesame
Sunbrella Dobby-Grade B



03Y Linen - Stone
Sunbrella Dobby-Grade B



44C Denver - Scarlett
Sunbrella Dobby-Grade D
Coord. 30R, 62A



30A Dupione Papaya
Sunbrella Dobby-Grade C
Coord. 72A



18Y Forest Green
Sunbrella Solid-Grade B

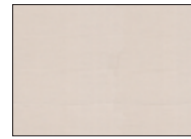


22Y Black
Sunbrella Solid-Grade B



50C Manor - Onyx
Sunbrella Dobby-Grade C

ACRYLIC/POLY JACQUARDS



67H Bridge Beach
Acrylic/Poly Jacquard-Grade B
Coord. 68H



68H Bridgeport Beach
Acrylic/Poly Jacquard-Grade B
Coord. 67H



69H Hyannis Mahogany
Acrylic/Poly Jacquard-Grade B

OLEFIN DOBBIES, JACQUARDS & STRIPES



13M Cavern - Black
Olefin Jacquard-Grade A
Coord. 11M



11M Castille - Black
Olefin Jacquard-Grade A
Coord. 13M

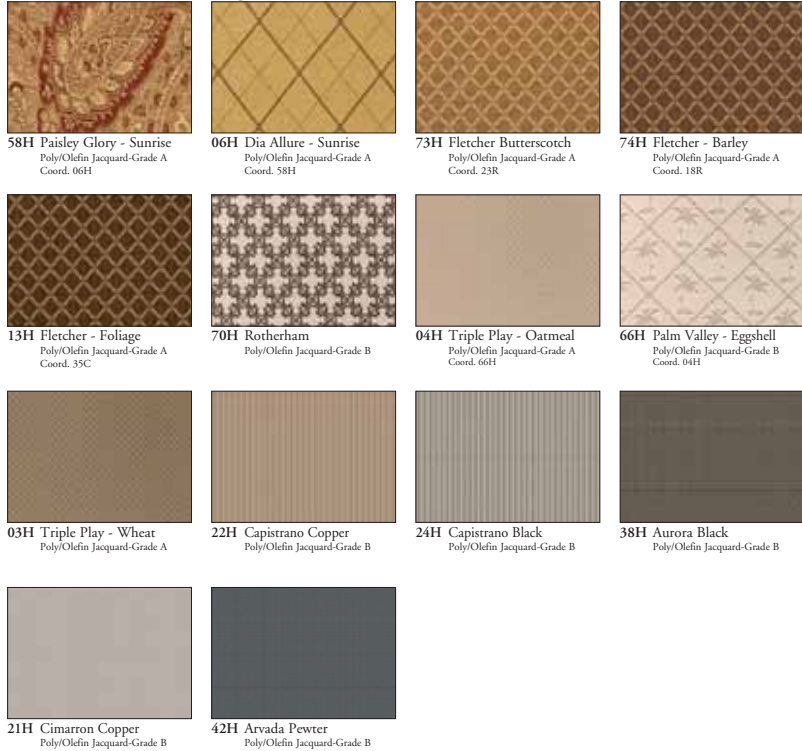


12M Cavern - Tan
Olefin Jacquard-Grade A
Coord. 10C, 10M, 18C



10M Castille - Tan
Olefin Jacquard-Grade A
Coord. 10C, 12M, 18C

POLY/OLEFIN JACQUARDS



Scale: 1" = 12"

PVC/ACRYLIC JACQUARDS, DOBBIES, SOLIDS & SUNBRELLA SLING®



Scale: 1" = 12"

PVC/OLEFIN JACQUARDS



33J Raffia - Blended
PVC/Olefin Jacquard-Grade B

30M Soft Sisal
PVC/Olefin Jacquard-Grade A
Coord. 45D

45D Current Sisal
PVC/Olefin Jacquard-Grade B
Coord. 30M

72E Monticello Stripe
PVC/Olefin Jacquard-Grade A



23D Brighton Cypress
PVC/Olefin Jacquard-Grade A

71D White Sisal
PVC/Olefin Jacquard-Grade A

69D Neitling
PVC/Olefin Jacquard-Grade B

67D Thayer
PVC/Olefin Jacquard-Grade B



51D Sisal
PVC/Olefin Jacquard-Grade B

68D Brennan
PVC/Olefin Jacquard-Grade B

70D Addison
PVC/Olefin Jacquard-Grade B

PVC/RELAXES & WICKER WEAVES



30F Glass Block - Toffee
PVC/Relax
For Wyatt Sling Only

35F Caramel - Sadat
PVC/Relax
For Wyatt Sling Only

33D Tacoma
PVC Wicker Weave-Grade A

11D Natural Wicker
PVC Wicker Weave-Grade B

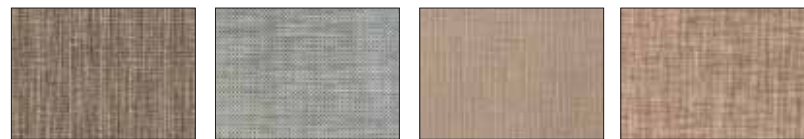


72D Bronze Wicker
PVC Wicker Weave-Grade A

77D Taupe Tweed
PVC Wicker Weave-Grade B

45J Flat Weave
PVC Wicker Weave-Grade D

14D Honey Wheat Wicker
PVC Wicker Weave-Grade A



38D Barcelona
PVC Wicker Weave-Grade B

30D Veracruz
PVC Wicker Weave-Grade A

78D Maderas Tweed
PVC Wicker Weave-Grade B

65D Lockwood
PVC Wicker Weave-Grade B

Scale: 1" = 12"

PVC/RELAXES & WICKER WEAVES, continued



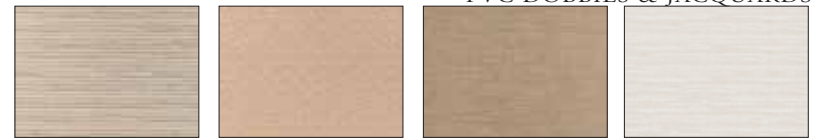
63D Sheridan
PVC Wicker Weave-Grade B

52D Alecia Lynn
PVC Wicker Weave-Grade B

40D Tucson
PVC Wicker Weave-Grade B

53D Stonebridge
PVC Wicker Weave-Grade A

PVC DOBBIES & JACQUARDS



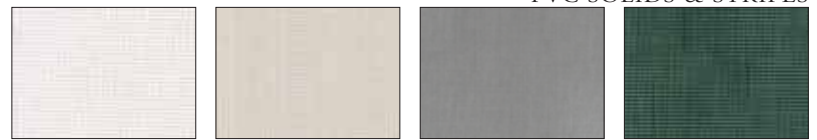
10J Vintage Blinds
PVC Jacquard-Grade A

11J Boxes
PVC Jacquard-Grade B

01J Burlap Variation
PVC Jacquard-Grade B

36D Vallejo
PVC Jacquard-Grade A

PVC SOLIDS & STRIPES



06B White
PVC Solid-Grade A

29B Putty
PVC Solid-Grade A

01B Pewter
PVC Solid-Grade A

79B Spruce
PVC Solid-Grade A



13B Navy
PVC Solid-Grade A

55L Putty Pinstripe
PVC Stripe-Grade A

92B Cape Cod Stripe
PVC Stripe-Grade A

PVC/TASLANS



03J Plush - Taupe
PVC/Taslan-Grade A
Coord. 05J

05J Sorrento Blend - Taupe
PVC/Taslan-Grade A
Coord. 05J

04J Sorrento Blend - Gold
PVC/Taslan-Grade A

sunbrella is a registered trademark of Glen Raven, Inc.

Scale: 1" = 12"

CORDS, FRINGE & CHAIR TIES



TAC Taupe Cord



TAF Taupe Fringe



TAT Taupe Chair Tie



BRC Brown Cord



BRF Brown Fringe



BRT Brown Chair Tie



BMC Black Multi Cord



BMF Black Multi Fringe



BMT Black Multi Chair Tie



BLC Black Cord



BLF Black Fringe



BLT Black Chair Tie

CORDS, FRINGE & CHAIR TIES, continued



ASC Aqua Shores Cord



ASF Aqua Shores Fringe



AST Aqua Shores Chair Tie



VBC Vellum-Brass Mixed Cord



VBF Vellum-Brass Mixed Fringe



VBT Vellum-Brass Mixed Chair Tie



HWC Henna-Wheat Mixed Cord



HWF Henna-Wheat Mixed Fringe



HWT Henna-Wheat Mixed Chair Tie

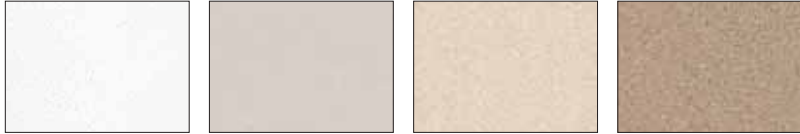


CRC Creme Cord

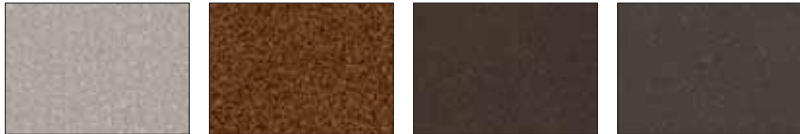


NMC Neutral Multi Cord

WOODARD STANDARD FRAME FINISHES - Classics Wrought Iron & Aluminum



20 Hammered White 19 Sandstone 72 Straw 62 Tuscan Sand



25 Mojave 83 Pecan 45 Espresso 27 Hazelnut



48 Chestnut Brown 39 Aged Green 35 Textured Cypress 52 Hammered Pewter



93 Twilight 75 Midnight 92 Textured Black 21 Black



43 Graphite

WOODARD PREMIUM FRAME FINISHES - Classics Wrought Iron & Aluminum



15 Chromite 74 Wheat 88 Walnut 26 Black Willow



37 Southern Pine 89 Black Opal 38 Mocha 18 Old World

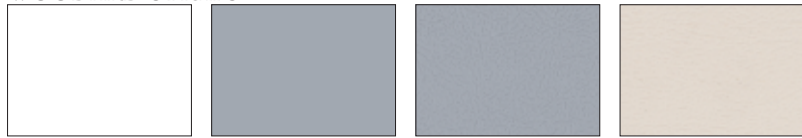


40 Venetian 86 Roasted Pecan 60 Burnished Pewter 91 Antique Graphite with Silver Rivets (Reston Only)

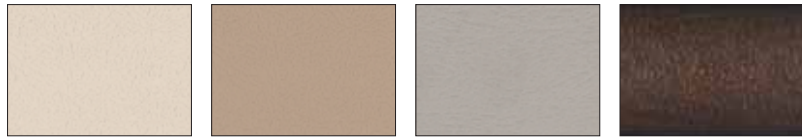


94 Old World with Gold Rivets (Reston Only)

WOODARD STRAPS



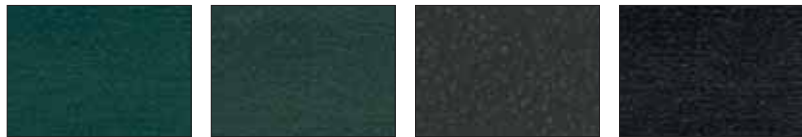
1A White 2W Smooth Chromite 2H Textured Chromite 4B Textured Sandstone



2N Textured Straw 2G Textured Tuscan Sand 3D Textured Mojave 3L Textured Leather



4N Textured Pecan 1B Textured Espresso 2E Textured Hazelnut 2A Textured Chestnut Brown



4X Textured Verdi 4H Textured Cypress 3N Hammered Pewter 4F Textured Black



1F Black

WOODARD WICKER

Samples provided for color not weave pattern.



Carlton (Natural)



Carlton (Mahogany)



South Shore (Weathered Ash)



Trinidad (Natural)



Trinidad (Burnished Pewter)



Trinidad (Java)

CARE INSTRUCTIONS



FABRIC, FINISH & STRAP CARE

	PVC, PVC WICKER WEAVE	ACRYLIC POLYOLEFIN, PVC/OLEFIN, PVC/ACRYLIC	CLASSES WROUGHT IRON FRAMES	ALUMINUM FRAMES & TOPS	VINYL STRAPS
CLEANING & MAINTENANCE	For best results, clean regularly with mild detergent and warm water. Cleaning will help prevent mildew by washing out dirt particles that may become trapped. Shake out excess moisture after rinsing and allow to dry thoroughly before storing.	Spot wash by sponging briskly with a mild soap in lukewarm water (do not exceed 100°F). Thoroughly rinse with clean water to remove soap. Allow to air dry completely before storing.	Clean with warm, soapy water. Damage to the paint finish may cause corrosion, touch up with paint immediately. To maintain the gloss on non-textured finishes, protect with a fine automotive wax.	Clean with a solution of warm water and mild soap. Use a fine automotive wax to maintain gloss on non-textured finishes.	Clean with mild laundry detergent and warm water. Strap contains an effective fungicide and UV stabilizers.
REMOVING STAINS, MILDEW, ETC.	Clean with a solution of warm water, mild laundry detergent, and chlorine bleach (no more than 1/4 cup per three gallons of water). Never use a solvent-type solution.	Same as above.	Woodard's multi-step finishing process results in a stain-resistant finish. Severe stains may require light sanding and touch-up painting.	Woodard's multi-step finishing process results in a stain-resistant finish. Severe stains may require light sanding and touch-up painting.	To remove scuff marks on vinyl straps, apply toothpaste or gentle abrasive to a clean, dry cloth and rub gently. To remove mildew, use a solution of warm water, mild laundry detergent, and chlorine bleach (no more than 1/4 cup per three gallons of water). Never use a solvent-type solution.
INSECT REPELLENTS & SUNTAN LOTIONS	Not recommended. Insect repellents and suntan lotions can reduce the life of PVC, accelerate fading and stain fabrics. To avoid damage, wipe clean with mild laundry detergent and warm water.	Not recommended. Insect repellents and suntan lotions can reduce the life of fabric, accelerate fading and stain fabrics. To avoid damage, wipe clean with mild laundry detergent and warm water. Do not use bleach or harsh detergents under any circumstances.	The finish on Woodard furniture is formulated and baked on to make it highly resistant to repellents and lotions. However, to avoid discoloration, clean metal parts of these products frequently.	The finish on Woodard furniture is formulated and baked on to make it highly resistant to repellents and lotions. However, to avoid discoloration, clean the frame as soon as possible after the exposure.	Not recommended. Insect repellents can reduce the life of vinyl plastic, accelerate fading and stain fabrics. To avoid damage, wipe clean with mild laundry detergent and warm water.
SPECIAL INSTRUCTIONS	DO NOT USE solvents, scouring agents, carbon tetrachloride, undiluted bleach, janitorial cleaners or gasoline. If in doubt about using a detergent, choose an inconspicuous area and test the cleaner.	DO NOT USE STEAM. Acrylic fibers are made of 100% acrylic fiber and are thermoplastic or heat sensitive. When spot washing, use lukewarm water (under 100°F). Allow to air dry. Do not use solvents, carbon tetrachloride, scouring agents, bleach, janitorial cleaners, gasoline or brushes.	Frame finish touch-up instructions: When covering small spots of surface rust, clean area by sanding lightly and wipe immediately to prevent rust. When preparing scratched areas for touch-up painting, rub lightly with a fine steel wool to smooth the surface and improve paint adhesion. Apply thin coats of touch-up paint and allow ample drying time between coats.	Frame finish touch-up instructions: When using touch-up paints, please follow instructions and cautions on product labels. If covering scratches, rub lightly with a fine steel wool to smooth the surface and improve paint adhesion. Apply thin coats of touch-up paint and allow ample drying time between coats.	DO NOT USE solvents, scouring agents, carbon tetrachloride, undiluted bleach, janitorial cleaners or gasoline. If in doubt about using a detergent, choose an inconspicuous area and test the cleaner.

GLASS & TOP CARE

	TEMPERED GLASS	IMPRESSION & STONE MOSAIC TOPS
CLEANING & MAINTENANCE	Clean regularly with a soft cloth, a mild detergent and warm water. Buff dry with a clean, lint-free cloth.	Clean regularly with a soft cloth and warm water. For stubborn dirt, wipe gently with a moist sponge and dry with a clean, soft cloth.
REMOVING STAINS, MILDEW, ETC.	Same as above.	Wet area immediately with warm water and a mild detergent. Let stand for a few minutes and wipe clean. If necessary, follow with a second cleaning using a soft cloth, warm water and a mild detergent. Wipe dry with a cloth.
SPECIAL INSTRUCTIONS	DO NOT USE solvents, scouring agents, carbon tetrachloride, undiluted bleach, janitorial cleaners or gasoline.	DO NOT USE solvents, scouring agents, carbon tetrachloride, undiluted bleach, janitorial cleaners or gasoline. Do not expose top to nail polish or acetone as these may damage the finish.

DESIGNER FABRIC REFERENCE GUIDE

FABRIC	FABRIC TYPE	DESCRIPTION	FABRIC GRADE	CUSHION WELT	UMBRELLA BINDING	AVAILABILITY		
						Cushion	Sling	Umbrella
01T	Boucle Jacquard	Senales Borgo - Pumpkin	E	01T	-	•		
02T	Boucle Jacquard	Senales Borgo - Milk Chocolate	E	02T	-	•		
05T	Acrylic Jacquard	Ishant Borgo - Pumpkin	E	05T	-	•		
07T	Acrylic Jacquard	Multicolor Borgo - Pumpkin	E	07T	-	•		
08T	Boucle Solid	Carei - Milk Chocolate	E	08T	-	•		
11T	Acrylic Jacquard	Misciu - Oatmeal/Taupe	E	11T	-	•		
12T	Acrylic Jacquard	Misciu - Pumpkin	E	12T	-	•		
15T	Chenille Stripe	Karnak Borgo - Oatmeal/Taupe	E	15T	-	•		
16T	Chenille Stripe	Karnak Borgo - Pumpkin	E	16T	-	•		
20T	Faux Leather	Brisa Distressed - Lasso	E	20T	-	•		
21T	Faux Leather	Brisa Distressed - Chaps	E	21T	-	•		
38T	Acrylic Solid	Lazy Day - Natural	E	38T	PTY			•
39T	Acrylic Print	Yatchman - Maple	E	39T	PTY			•
41T	Acrylic Stripe	Tropicale - Black	E	41T	BLK			•
90T	Acrylic Jacquard	Ultrawave	E	90T	-	•		

FABRIC REFERENCE GUIDE

FABRIC	FABRIC TYPE	DESCRIPTION	FABRIC GRADE	CUSHION WELT	UMBRELLA BINDING	AVAILABILITY			
						Cushion	Sling	Padded Sling	Umbrella
01B	PVC Solid	Pewter	A	-	BLK		•		•
01J	PVC Jacquard	Burlap Variation	B	-	CML		•		•
01Y	Sunbrella Solid	Canvas - Spa	B	01Y	WHT	•			•
02S	Sunbrella Jacquard	Melrose - Chili	D	02S	-	•			•
03A	Acrylic Stripe	Padgentville - Lacquar	B	03A	PTY				•
03H	Poly/Olefin Jacquard	Triple Play - Wheat	A	03H	CML				•
03J	PVC/Taslan	Plush - Taupe	A	03J	-	•			•
03Y	Sunbrella Dobby	Linen - Stone	B	03Y	BLK				•
04E	Sunbrella Sling	Putty	B	04E	PTY		•		•
04H	Poly/Olefin Jacquard	Triple Play - Oatmeal	A	04H	PTY				•
04J	PVC/Taslan	Sorrento Blend - Gold	A	-	CML				•
05A	Sunbrella Stripe	Brannon - Whisper	B	05A	PTY				•
05J	PVC/Taslan	Sorrento Blend - Taupe	A	-	CML				•
05Y	Sunbrella Dobby	Linen - Sesame	B	05Y	CML				•
06B	PVC Solid	White	A	-	WHT				•
06E	Sunbrella Sling	Baron - Oak	C	-	-				•
06H	Poly/Olefin Jacquard	Dia Allure - Sunrise	A	06H	CML				•
07R	Sunbrella Jacquard	Silhouette - Seaside	D	07R	CML				•
08A	Sunbrella Stripe	Gulfport - Barley	B	08A	CML				•
10C	Sunbrella Jacquard	Top Coat - Barley	C	10C	CML				•
10J	PVC Jacquard	Vintage Blinds	A	-	PTY				•
10M	Olefin Jacquard	Castille - Tan	A	10M	WHT				•
10R	Sunbrella Jacquard	Iota - Raisin	D	10R	-				•
10Y	Sunbrella Solid	Natural	B	10Y	WHT				•
11D	PVC Wicker Weave	Natural Wicker	B	-	-				•
11J	PVC Jacquard	Boxes	B	-	-				•
11M	Olefin Jacquard	Castille - Black	A	11M	BLK				•
11R	Sunbrella Jacquard	Kennedy - Chestnut	D	11R	-				•
12M	Olefin Jacquard	Cavern - Tan	A	12M	WHT				•
12Y	Sunbrella Solid	Antique Beige	B	12Y	CML				•
13B	PVC Solid	Navy	A	-	NAVY				•
13H	Poly/Olefin Jacquard	Fletcher - Foliage	A	13H	CML				•
13M	Olefin Jacquard	Cavern - Black	A	13M	BLK				•
14C	Sunbrella Jacquard Stripe	Jazz - Buttercup	C	14C	WHT				•
14D	PVC Wicker Weave	Honey Wheat Wicker	A	-	-				•
14Y	Sunbrella Solid	Bird's Eye Canvas	B	14Y	CML				•
15C	Sunbrella Jacquard	Boheme - Sand	C	15C	PTY				•
15E	PVC/Acrylic Jacquard	Meadowood	B	-	CML				•
15R	Sunbrella Jacquard	Marsilea - Sunrise	D	15R	-				•
16C	Sunbrella Jacquard Stripe	Jazz - Mushroom	C	16C	PTY				•
16E	Sunbrella Sling	Havana - Wheat	B	16E	CML				•
17C	Sunbrella Jacquard Stripe	Jazz - Parchment	C	17C	PTY				•
17E	Sunbrella Sling	Tusar - Sesame	C	17E	CML				•
17R	Sunbrella Jacquard	Cozumel - Nugget	D	17R	-				•
17S	Sunbrella Solid	Litchfield - Vellum	D	17S	-				•
18A	Sunbrella Stripe	Davidson - Walnut	B	18A	CML				•
18C	Sunbrella Jacquard Stripe	Jazz - Wheat	C	18C	WHT				•
18E	PVC/Acrylic Jacquard	Sandwicker	A	-	CML				•
18R	Sunbrella Jacquard	Cozumel - Walnut	D	18R	-				•
18S	Sunbrella Solid	Litchfield - Bamboo	D	18S	-				•

BLK: Black CML: Camel NAVY: Navy PTY: Putty WGR: Wood Green WHT: White

FABRIC REFERENCE GUIDE

FABRIC	FABRIC TYPE	DESCRIPTION	FABRIC GRADE	CUSHION WELT	UMBRELLA BINDING	AVAILABILITY			
						Cushion	Sling	Padded Sling	Umbrella
18Y	Sunbrella Solid	Forest Green	B	18Y	WGR	*			*
19C	Sunbrella Jacquard Stripe	Jazz - Parrott	C	19C	WHT	*			*
19S	Sunbrella Solid	Litchfield - Willow	D	19S	-	*			*
20C	Sunbrella Dobby	Fife - Bark	C	20C	PTY	*			*
20R	Sunbrella Jacquard	Marion - Blush	C	20R	-	*			*
20S	Sunbrella Jacquard	Tropical - Opal	D	20S	-	*			*
21H	Poly/Olefin Jacquard	Cimarron Copper	B	21H	PTY	*	*		*
22H	Poly/Olefin Jacquard	Capistrano Copper	B	22H	CML	*	*		*
22Y	Sunbrella Solid	Black	B	22Y	BLK	*	*		*
23A	Sunbrella Linen	Linen Chili	B	23A	CML	*	*		*
23D	PVC/Olefin Jacquard	Brighton Cypress	A	-	WGR	*	*		*
23R	Sunbrella Jacquard	Vanderbilt - Wheat	D	23R	-	*	*		*
24A	Sunbrella Stripe	Overture - Spice	C	24A	CML	*	*		*
24H	Poly/Olefin Jacquard	Capistrano Black	B	24H	CML	*	*		*
25A	Sunbrella Stripe	Taupe/Antique Beige	C	25A	PTY	*	*		*
25C	Sunbrella Dobby	Flagship - Pecan	C	25C	PTY	*	*		*
25R	Sunbrella Jacquard	Martini - Raisin	D	25R	-	*	*		*
27Y	Sunbrella Solid	Heather Beige	B	71Y	CML	*	*		*
29B	PVC Solid	Putty	A	-	PTY	*	*		*
29P	Sunbrella Dobby	Dots Nice - Stone	B	29P	PTY	*	*		*
30A	Sunbrella Dobby	Dupione Papaya	C	30A	CML	*	*		*
30C	Sunbrella Jacquard	Top Coat - Wren	C	30C	PTY	*	*		*
30D	PVC Wicker Weave	Veracruz	A	-	PTY	*	*		*
30F	PVC/Relax	Glass Block - Toffee	D	-	-		WSO		*
30M	PVC/Olefin Jacquard	Soft Sisal	A	30M	CML	*	*		*
30R	Sunbrella Stripe	Wolcott - Beige	C	30R	CML	*	*		*
30S	Sunbrella Jacquard	Borneo - Cocoa	D	30S	-	*	*		*
31A	Sunbrella Stripe	Simpson - Seaspray	B	31A	CML	*	*		*
33D	PVC Wicker Weave	Tacoma	A	-	-	*	*		*
33J	PVC/Olefin Jacquard	Raffia - Blended	B	-	CML	*	*		*
33S	Sunbrella Jacquard	Cortez - Cypress	D	33S	-	*	*		*
35A	Sunbrella Stripe	Teton - Willow	D	35A	-	*	*		*
35C	Sunbrella Dobby	Murchison - Palm	D	35C	CML	*	*		*
35F	PVC/Relax	Caramel - Sadat	D	-	-		WSO		*
36D	PVC Jacquard	Vallejo	A	-	PTY	*	*		*
36E	Sunbrella Sling	Lafayette Camel	B	36E	PTY	*	*	*	*
37S	Acrylic Print	Paradise Palm	D	37S	-	*	*		*
38D	PVC Wicker Weave	Barcelona	B	-	-	*	*		*
38H	Poly/Olefin Jacquard	Aurora Black	B	38H	BLK	*	*		*
39S	Acrylic Print	Terra Ceia	D	39S	-	*	*		*
40C	Sunbrella Jacquard	Cambridge - Cocoa	C	40C	CML	*	*		*
40D	PVC Wicker Weave	Tuscon	B	-	PTY	*	*		*
40M	Sunbrella Sling	Finesse - Walnut	C	-	-	*	*		*
40Y	Sunbrella Solid	Antique Beige Linen	B	40Y	CML	*	*		*
42C	Sunbrella Jacquard	Ibsen - Bluemist	C	42C	PTY	*	*		*
42H	Poly/Olefin Jacquard	Arvada Pewter	B	42H	BLK	*	*		*
42S	Sunbrella Sling	Mattox Owings	D	42S	CML	*	*		*
43S	Sunbrella Sling	Mattox Briggs	B	43S	WHT	*	*		*
44C	Sunbrella Dobby	Denver - Scarlett	D	44C	CML	*	*		*
45D	PVC/Olefin Jacquard	Current Sisal	B	-	CML	*	*		*
45J	PVC Wicker Weave	Flat Weave	D	-	-	*	*		*
45M	Sunbrella Sling	Fiera - Walnut	C	-	-	*	*		*
45S	Sunbrella Jacquard	Puddles - Mushroom	D	45S	-	*	*		*
46C	Sunbrella Dobby	Quadrant Sage	C	46C	CML	*	*		*
46S	Sunbrella Jacquard	Bingata - Henna	D	46S	-	*	*		*
47S	Sunbrella Jacquard	Burma - Clove	D	47S	-	*	*		*
48A	Sunbrella Stripe	Abacos - Barley	D	48A	PTY	*	*		*
48C	Acrylic Jacquard	Pasha - Pecan	D	48C	BLK	*	*		*
48S	Sunbrella Chenille	Cello - Tusk	D	48S	-	*	*		*
49A	Sunbrella Stripe	Abacos - Straw	D	49A	CML	*	*		*
50C	Sunbrella Dobby	Manor - Onyx	C	50C	PTY	*	*		*
50S	Acrylic Print	Mesh Impressions - Forest	D	50S	-	*	*		*
51D	PVC/Olefin Jacquard	Sisal	B	-	PTY	*	*	*	*
51Y	Sunbrella Stripe	Taupe/Black Linen Stripe	B	51Y	BLK	*	*		*
52D	PVC Wicker Weave	Alecia Lynn	B	-	PTY	*	*		*
52S	Sunbrella Dobby	Amara - Opal	D	52S	PTY	*	*		*
53D	PVC Wicker Weave	Stonebridge	A	-	BLK	*	*		*
53E	Sunbrella Sling	Cortez Pewter	B	53E	BLK	*	*		*
53S	Sunbrella Jacquard	Indochime - Clove	D	53S	CML	*	*		*
55L	PVC Stripe	Putty Pinstripe	A	-	PTY	*	*		*
55S	Acrylic Print	Screened In - Meadow	D	55S	CML	*	*		*

FABRIC REFERENCE GUIDE

FABRIC	FABRIC TYPE	DESCRIPTION	FABRIC GRADE	CUSHION WELT	UMBRELLA BINDING	AVAILABILITY			
						Cushion	Sling	Padded Sling	Umbrella
56Y	Sunbrella Solid	Canvas - Parrot	B	56Y	CML	*			*
58E	Sunbrella Sling	Weyburn Copper	B	58E	CML	*	*	*	*
58H	Poly/Olefin Jacquard	Paisley Glory - Sunrise	A	58H	CML	*	*	*	*
59S	Sunbrella Dobby	Canyon - Bamboo	D	59S	CML	*	*	*	*
61S	Sunbrella Jacquard	Kieran Spice	C	61S	CML	*	*	*	*
62A	Sunbrella Stripe	Zanzibar - Salsa	D	62A	-	*	*	*	*
62Y	Sunbrella Dobby	Champagne Linen	B	62Y	PTY	*	*	*	*
63D	PVC Wicker Weave	Sheridan	B	-	-	*	*	*	*
64S	Sunbrella Jacquard	Napa Spice	D	64S	CML	*	*	*	*
65C	Sunbrella Dobby	Limelight - Leaf	D	65C	-	*	*	*	*
65D	PVC Wicker Weave	Lockwood	B	-	-	*	*	*	*
65S	Sunbrella Jacquard	Siam - Clove	D	65S	-	*	*	*	*
66E	Sunbrella Sling	Augustine Raffia	B	66E	WGR	*	*	*	*
66H	Poly/Olefin Jacquard	Palm Valley - Eggshell	B	66H	WHT	*	*	*	*
67D	PVC/Olefin Jacquard	Thayer	B	-	PTY	*	*	*	*
67E	Sunbrella Sling	Augustine Gravel	B	67E	BLK	*	*	*	*
67H	Acrylic/Poly Jacquard	Bridge Beach	B	67H	PTY	*	*	*	*
67S	Sunbrella Jacquard	Sultan - Camel	D	67S	-	*	*	*	*
68D	PVC/Olefin Jacquard	Brennan	B	-	BLK	*	*	*	*
68H	Acrylic/Poly Jacquard	Bridgeport Beach	B	68H	PTY	*	*	*	*
68S	Sunbrella Jacquard	Sultan - Medina	D	68S	CML	*	*	*	*
69D	PVC/Olefin Jacquard	Neitling	B	-	WHT	*	*	*	*
69E	Sunbrella Sling	Riviera Camel	B	69E	CML	*	*	*	*
69H	Acrylic/Poly Jacquard	Hyannis Mahogany	B	69H	CML	*	*	*	*
69S	Sunbrella Chenille	Viola - Malt	D	69S	-	*	*	*	*
70D	PVC/Olefin Jacquard	Addison	B	-	CML	*	*	*	*
70H	Poly/Olefin Jacquard	Rotherham	B	70H	BLK	*	*	*	*
70Y	Sunbrella Jacquard	Kittrell - Onyx	D	70Y	BLK	*	*	*	*
71D	PVC/Olefin Jacquard	White Sisal	A	-	-	*	*	*	*
71S	Acrylic Print	Mesh Impressions - Meadow	D	71S	CML	*	*	*	*
71Y	Sunbrella Solid	Canvas - Fern	B	71Y	CML	*	*	*	*
72A	Sunbrella Stripe	Dimone - Sequoia	C	72A	CML	*	*	*	*
72D	PVC Wicker Weave	Bronze Wicker	A	-	-	*	*	*	*
72E	PVC/Olefin Jacquard	Monticello Stripe	A	-	PTY	*	*	*	*
72S	Sunbrella Chenille	Chenille - Spa	D	72S	PTY	*	*	*	*
73H	Poly/Olefin Jacquard	Fletcher - Butterscotch	A	73H	CML	*	*	*	*
74H	Poly/Olefin Jacquard	Fletcher - Barley	A	74H	CML	*	*	*	*
74S	Sunbrella Matlasse	JR Kyoto - Bark	D	74S	-	*	*	*	*
76S	Sunbrella Jacquard	Venezia II - Seaspray	D	76S	CML	*	*	*	*
77C	Sunbrella Dobby	Trax - Wren	D	77C	CML	*	*	*	*
77D	PVC Wicker Weave	Taupe Tweed	B	-	-	*	*	*	*
77S	Sunbrella Jacquard	Barkley - Harvest	D	77S	-	*	*	*	*
78D	PVC Wicker Weave	Maderas Tweed	B	-	CML	*	*	*	*
78S	Sunbrella Dobby	Blake - Wheat	D	78S	-	*	*	*	*
79B	PVC Solid	Spruce	A	-	WGR	*	*	*	*
79S	Sunbrella Chenille	Viola - Chestnut	D	79S	-	*	*	*	*
80S	Sunbrella Jacquard	Batik - Henna	D	80S	-	*	*	*	*
84S	Acrylic Jacquard	Soft Texture	D	84S	PTY	*	*	*	*
86S	Sunbrella Jacquard	Brevard - Concord	D	86S	-	*	*	*	*
87S	Sunbrella Solid	Velvet - Plum	D	87S	-	*	*	*	*
88S	Sunbrella Solid	Velvet - Antique Beige	D	88S	-	*	*	*	*
90E	Sunbrella Sling	Fairchild	D	90E	PTY	*	*	*	*
92B	PVC Stripe	Cape Cod Stripe	A	-	WHT	*	*	*	*
98E	Sunbrella Sling	Calvin Canyon	C	-	-	*	*	*	*

Crypton Fabrics are also available, see your sales representative or www.woodard-furniture.com for details.

DESIGNER FABRIC REFERENCE GUIDE

FABRIC	FABRIC TYPE	DESCRIPTION	FABRIC GRADE	CUSHION WELT	UMBRELLA BINDING	AVAILABILITY		
						Cushion	Sling	Umbrella
01T	Boucle Jacquard	Senales Borgo - Pumpkin	E	01T	-	•		
02T	Boucle Jacquard	Senales Borgo - Milk Chocolate	E	02T	-	•		
05T	Acrylic Jacquard	Isfhant Borgo - Pumpkin	E	05T	-	•		
07T	Acrylic Jacquard	Multicolor Borgo - Pumpkin	E	07T	-	•		
08T	Boucle Solid	Carei - Milk Chocolate	E	08T	-	•		
11T	Acrylic Jacquard	Misciu - Oatmeal/Taupe	E	11T	-	•		
12T	Acrylic Jacquard	Misciu - Pumpkin	E	12T	-	•		
15T	Chenille Stripe	Karnak Borgo - Oatmeal/Taupe	E	15T	-	•		
16T	Chenille Stripe	Karnak Borgo - Pumpkin	E	16T	-	•		
20T	Faux Leather	Brisa Distressed - Lasso	E	20T	-	•		
21T	Faux Leather	Brisa Distressed - Chaps	E	21T	-	•		
38T	Acrylic Solid	Lazy Day - Natural	E	38T	PTY	•		•
39T	Acrylic Print	Yatchman - Maple	E	39T	PTY	•		•
41T	Acrylic Stripe	Tropicale - Black	E	41T	BLK	•		•
90T	Acrylic Jacquard	Ultrawave	E	90T	-	•		

FABRIC REFERENCE GUIDE

FABRIC	FABRIC TYPE	DESCRIPTION	FABRIC GRADE	CUSHION WELT	UMBRELLA BINDING	AVAILABILITY			
						Cushion	Sling	Padded Sling	Umbrella
01B	PVC Solid	Pewter	A	-	BLK		•		•
01J	PVC Jacquard	Burlap Variation	B	-	CML		•		•
01Y	Sunbrella Solid	Canvas - Spa	B	01Y	WHT	•			•
02S	Sunbrella Jacquard	Melrose - Chili	D	02S	-	•			
03A	Acrylic Stripe	Padgentville - Lacquar	B	03A	PTY	•			•
03H	Poly/Olefin Jacquard	Triple Play - Wheat	A	03H	CML	•			•
03J	PVC/Taslan	Plush - Taupe	A	03J	-	•			
03Y	Sunbrella Dobby	Linen - Stone	B	03Y	BLK	•			•
04E	Sunbrella Sling	Putty	B	04E	PTY	•	•		•
04H	Poly/Olefin Jacquard	Triple Play - Oatmeal	A	04H	PTY	•			•
04J	PVC/Taslan	Sorrento Blend - Gold	A	-	CML		•		•
05A	Sunbrella Stripe	Brannon - Whisper	B	05A	PTY	•			•
05J	PVC/Taslan	Sorrento Blend - Taupe	A	-	CML		•		•
05Y	Sunbrella Dobby	Linen - Sesame	B	05Y	CML	•			•
06B	PVC Solid	White	A	-	WHT		•		•
06E	Sunbrella Sling	Baron - Oak	C	-	-		•		
06H	Poly/Olefin Jacquard	Dia Allure - Sunrise	A	06H	CML	•			•
07R	Sunbrella Jacquard	Silhouette - Seaside	D	07R	CML	•			•
08A	Sunbrella Stripe	Gulfport - Barley	B	08A	CML	•			•
10C	Sunbrella Jacquard	Top Coat - Barley	C	10C	CML	•			•
10J	PVC Jacquard	Vintage Blinds	A	-	PTY		•		•
10M	Olefin Jacquard	Castille - Tan	A	10M	WHT	•			•
10R	Sunbrella Jacquard	Iota - Raisin	D	10R	-	•			
10Y	Sunbrella Solid	Natural	B	10Y	WHT	•			•
11D	PVC Wicker Weave	Natural Wicker	B	-	-		•		
11J	PVC Jacquard	Boxes	B	-	-		•		
11M	Olefin Jacquard	Castille - Black	A	11M	BLK	•			•
11R	Sunbrella Jacquard	Kennedy - Chestnut	D	11R	-	•			
12M	Olefin Jacquard	Cavern - Tan	A	12M	WHT	•			•
12Y	Sunbrella Solid	Antique Beige	B	12Y	CML	•			•
13B	PVC Solid	Navy	A	-	NVY		•		•
13H	Poly/Olefin Jacquard	Fletcher - Foliage	A	13H	CML	•			•
13M	Olefin Jacquard	Cavern - Black	A	13M	BLK	•			•
14C	Sunbrella Jacquard Stripe	Jazz - Buttercup	C	14C	WHT	•			•
14D	PVC Wicker Weave	Honey Wheat Wicker	A	-	-		•		
14Y	Sunbrella Solid	Bird's Eye Canvas	B	14Y	CML	•			•
15C	Sunbrella Jacquard	Boheme - Sand	C	15C	PTY	•			•
15E	PVC/Acrylic Jacquard	Meadowood	B	-	CML		•	•	•
15R	Sunbrella Jacquard	Marsilea - Sunrise	D	15R	-	•			
16C	Sunbrella Jacquard Stripe	Jazz - Mushroom	C	16C	PTY	•			•
16E	Sunbrella Sling	Havana - Wheat	B	16E	CML	•	•	•	•
17C	Sunbrella Jacquard Stripe	Jazz - Parchment	C	17C	PTY	•			•
17E	Sunbrella Sling	Tussar - Sesame	C	17E	CML	•	•	•	•
17R	Sunbrella Jacquard	Cozumel - Nugget	D	17R	-	•			
17S	Sunbrella Solid	Litchfield - Vellum	D	17S	-	•			
18A	Sunbrella Stripe	Davidson - Walnut	B	18A	CML	•			•
18C	Sunbrella Jacquard Stripe	Jazz - Wheat	C	18C	WHT	•			•
18E	PVC/Acrylic Jacquard	Sandwicker	A	-	CML		•		•
18R	Sunbrella Jacquard	Cozumel - Walnut	D	18R	-	•			
18S	Sunbrella Solid	Litchfield - Bamboo	D	18S	-	•			

BLK: Black CML: Camel NVY: Navy PTY: Putty WGR: Wood Green WHT: White

FABRIC REFERENCE GUIDE

FABRIC	FABRIC TYPE	DESCRIPTION	FABRIC GRADE	CUSHION WELT	UMBRELLA BINDING	AVAILABILITY			
						Cushion	Sling	Padded Sling	Umbrella
18Y	Sunbrella Solid	Forest Green	B	18Y	WGR	*			*
19C	Sunbrella Jacquard Stripe	Jazz - Parrott	C	19C	WHT	*			*
19S	Sunbrella Solid	Litchfield - Willow	D	19S	-	*			*
20C	Sunbrella Dobby	Fife - Bark	C	20C	PTY	*			*
20R	Sunbrella Jacquard	Marion - Blush	C	20R	-	*			*
20S	Sunbrella Jacquard	Tropical - Opal	D	20S	-	*			*
21H	Poly/Olefin Jacquard	Cimarron Copper	B	21H	PTY	*	*		*
22H	Poly/Olefin Jacquard	Capistrano Copper	B	22H	CML	*	*		*
22Y	Sunbrella Solid	Black	B	22Y	BLK	*			*
23A	Sunbrella Linen	Linen Chili	B	23A	CML	*			*
23D	PVC/Olefin Jacquard	Brighton Cypress	A	-	WGR	*	*		*
23R	Sunbrella Jacquard	Vanderbilt - Wheat	D	23R	-	*			*
24A	Sunbrella Stripe	Overture - Spice	C	24A	CML	*			*
24H	Poly/Olefin Jacquard	Capistrano Black	B	24H	CML	*	*		*
25A	Sunbrella Stripe	Taupe/Antique Beige	C	25A	PTY	*			*
25C	Sunbrella Dobby	Flagship - Pecan	C	25C	PTY	*			*
25R	Sunbrella Jacquard	Martini - Raisin	D	25R	-	*			*
27Y	Sunbrella Solid	Heather Beige	B	71Y	CML	*			*
29B	PVC Solid	Putty	A	-	PTY	*	*		*
29P	Sunbrella Dobby	Dots Nice - Stone	B	29P	PTY	*	*		*
30A	Sunbrella Dobby	Dupione Papaya	C	30A	CML	*			*
30C	Sunbrella Jacquard	Top Coat - Wren	C	30C	PTY	*	*		*
30D	PVC Wicker Weave	Veracruz	A	-	PTY	*	*		*
30F	PVC/Relax	Glass Block - Toffee	D	-	-		WSO		*
30M	PVC/Olefin Jacquard	Soft Sisal	A	30M	CML	*	*		*
30R	Sunbrella Stripe	Wolcott - Beige	C	30R	CML	*	*		*
30S	Sunbrella Jacquard	Borneo - Cocoa	D	30S	-	*	*		*
31A	Sunbrella Stripe	Simpson - Seaspray	B	31A	CML	*	*		*
33D	PVC Wicker Weave	Tacoma	A	-	-	*	*		*
33J	PVC/Olefin Jacquard	Raffia - Blended	B	-	CML	*	*		*
33S	Sunbrella Jacquard	Cortez - Cypress	D	33S	-	*	*		*
35A	Sunbrella Stripe	Teton - Willow	D	35A	-	*	*		*
35C	Sunbrella Dobby	Marchison - Palm	D	35C	CML	*	*		*
35F	PVC/Relax	Caramel - Sadat	D	-	-		WSO		*
36D	PVC Jacquard	Vallejo	A	-	PTY	*	*		*
36E	Sunbrella Sling	Lafayette Camel	B	36E	PTY	*	*	*	*
37S	Acrylic Print	Paradise Palm	D	37S	-	*	*		*
38D	PVC Wicker Weave	Barcelona	B	-	-	*	*		*
38H	Poly/Olefin Jacquard	Aurora Black	B	38H	BLK	*	*		*
39S	Acrylic Print	Terra Ceia	D	39S	-	*	*		*
40C	Sunbrella Jacquard	Cambridge - Cocoa	C	40C	CML	*	*		*
40D	PVC Wicker Weave	Tuscon	B	-	PTY	*	*		*
40M	Sunbrella Sling	Finesse - Walnut	C	-	-	*	*		*
40Y	Sunbrella Solid	Antique Beige Linen	B	40Y	CML	*	*		*
42C	Sunbrella Jacquard	Ibesen - Bluemist	C	42C	PTY	*	*		*
42H	Poly/Olefin Jacquard	Arvada Pewter	B	42H	BLK	*	*		*
42S	Sunbrella Sling	Mattox Owings	D	42S	CML	*	*		*
43S	Sunbrella Sling	Mattox Briggs	B	43S	WHT	*	*		*
44C	Sunbrella Dobby	Denver - Scarlett	D	44C	CML	*	*		*
45D	PVC/Olefin Jacquard	Current Sisal	B	-	CML	*	*	*	*
45J	PVC Wicker Weave	Flat Weave	D	-	-	*	*		*
45M	Sunbrella Sling	Fiera - Walnut	C	-	-	*	*		*
45S	Sunbrella Jacquard	Puddles - Mushroom	D	45S	-	*	*		*
46C	Sunbrella Dobby	Quadrant Sage	C	46C	CML	*	*		*
46S	Sunbrella Jacquard	Bingata - Henna	D	46S	-	*	*		*
47S	Sunbrella Jacquard	Burma - Clove	D	47S	-	*	*		*
48A	Sunbrella Stripe	Abacos - Barley	D	48A	PTY	*	*		*
48C	Acrylic Jacquard	Pasha - Pecan	D	48C	BLK	*	*		*
48S	Sunbrella Chenille	Cello - Tusk	D	48S	-	*	*		*
49A	Sunbrella Stripe	Abacos - Straw	D	49A	CML	*	*		*
50C	Sunbrella Dobby	Manor - Onyx	C	50C	PTY	*	*		*
50S	Acrylic Print	Mesh Impressions - Forest	D	50S	-	*	*		*
51D	PVC/Olefin Jacquard	Sisal	B	-	PTY	*	*	*	*
51Y	Sunbrella Stripe	Taupe/Black Linen Stripe	B	51Y	BLK	*	*		*
52D	PVC Wicker Weave	Alecia Lynn	B	-	PTY	*	*		*
52S	Sunbrella Dobby	Amara - Opal	D	52S	PTY	*	*		*
53D	PVC Wicker Weave	Stonebridge	A	-	BLK	*	*		*
53E	Sunbrella Sling	Cortez Pewter	B	53E	BLK	*	*		*
53S	Sunbrella Jacquard	Indochime - Clove	D	53S	CML	*	*		*
55L	PVC Stripe	Putty Pinstripe	A	-	PTY	*	*		*
55S	Acrylic Print	Screened In - Meadow	D	55S	CML	*	*		*

BLK: Black CML: Camel Nvy: Navy PTY: Putty WGR: Wood Green WHT: White WSO: Wyatt Sling Only

FABRIC REFERENCE GUIDE

FABRIC	FABRIC TYPE	DESCRIPTION	FABRIC GRADE	CUSHION WELT	UMBRELLA BINDING	AVAILABILITY			
						Cushion	Sling	Padded Sling	Umbrella
56Y	Sunbrella Solid	Canvas - Parrot	B	56Y	CML	*			*
58E	Sunbrella Sling	Weyburn Copper	B	58E	CML	*	*	*	*
58H	Poly/Olefin Jacquard	Paisley Glory - Sunrise	A	58H	CML	*			*
59S	Sunbrella Dobby	Canyon - Bamboo	D	59S	CML	*			*
61S	Sunbrella Jacquard	Kieran Spice	C	61S	CML	*			*
62A	Sunbrella Stripe	Zanzibar - Salsa	D	62A	-	*			*
62Y	Sunbrella Dobby	Champagne Linen	B	62Y	PTY	*			*
63D	PVC Wicker Weave	Sheridan	B	-	-	*	*		*
64S	Sunbrella Jacquard	Napa Spice	D	64S	CML	*			*
65C	Sunbrella Dobby	Limelight - Leaf	D	65C	-	*			*
65D	PVC Wicker Weave	Lockwood	B	-	-	*	*		*
65S	Sunbrella Jacquard	Siam - Clove	D	65S	-	*			*
66E	Sunbrella Sling	Augustine Raffia	B	66E	WGR	*	*	*	*
66H	Poly/Olefin Jacquard	Palm Valley - Eggshell	B	66H	WHT	*	*		*
67D	PVC/Olefin Jacquard	Thayer	B	-	PTY	*	*		*
67E	Sunbrella Sling	Augustine Gravel	B	67E	BLK	*	*	*	*
67H	Acrylic/Poly Jacquard	Bridge Beach	B	67H	PTY	*	*		*
67S	Sunbrella Jacquard	Sultan - Camel	D	67S	-	*	*		*
68D	PVC/Olefin Jacquard	Brennan	B	-	BLK	*	*		*
68H	Acrylic/Poly Jacquard	Bridgeport Beach	B	68H	PTY	*	*		*
68S	Sunbrella Jacquard	Sultan - Medina	D	68S	CML	*	*		*
69D	PVC/Olefin Jacquard	Neiding	B	-	WHT	*	*		*
69E	Sunbrella Sling	Riviera Camel	B	69E	CML	*	*		*
69H	Acrylic/Poly Jacquard	Hyannis Mahogany	B	69H	CML	*	*		*
69S	Sunbrella Chenille	Viola - Malt	D	69S	-	*	*		*
70D	PVC/Olefin Jacquard	Addison	B	-	CML	*	*		*
70H	Poly/Olefin Jacquard	Rotherham	B	70H	BLK	*	*		*
70Y	Sunbrella Jacquard	Kittrell - Onyx	D	70Y	BLK	*	*		*
71D	PVC/Olefin Jacquard	White Sisal	A	-	-	*	*		*
71S	Acrylic Print	Mesh Impressions - Meadow	D	71S	CML	*	*		*
71Y	Sunbrella Solid	Canvas - Fern	B	71Y	CML	*	*		*
72A	Sunbrella Stripe	Dimone - Sequoia	C	72A	CML	*	*		*
72D	PVC Wicker Weave	Bronze Wicker	A	-	-	*	*		*
72E	PVC/Olefin Jacquard	Monticello Stripe	A	-	PTY	*	*		*
72S	Sunbrella Chenille	Chenille - Spa	D	72S	PTY	*	*		*
73H	Poly/Olefin Jacquard	Fletcher - Butterscotch	A	73H	CML	*	*		*
74H	Poly/Olefin Jacquard	Fletcher - Barley	A	74H	CML	*	*		*
74S	Sunbrella Matlasse	JR Kyoto - Bark	D	74S	-	*	*		*
76S	Sunbrella Jacquard	Venezia II - Seaspray	D	76S	CML	*	*		*
77C	Sunbrella Dobby	Trax - Wren	D	77C	CML	*	*		*
77D	PVC Wicker Weave	Taupe Tweed	B	-	-	*	*		*
77S	Sunbrella Jacquard	Barkley - Harvest	D	77S	-	*	*		*
78D	PVC Wicker Weave	Maderas Tweed	B	-	CML	*	*		*
78S	Sunbrella Dobby	Blake - Wheat	D	78S	-	*	*		*
79B	PVC Solid	Spruce	A	-	WGR	*	*		*
79S	Sunbrella Chenille	Viola - Chestnut	D	79S	-	*	*		*
80S	Sunbrella Jacquard	Batik - Henna	D	80S	-	*	*		*
84S	Acrylic Jacquard	Soft Texture	D	84S	PTY	*	*		*
86S	Sunbrella Jacquard	Brevard - Concord	D	86S	-	*	*		*
87S	Sunbrella Solid	Velvet - Plum	D	87S	-	*	*		*
88S	Sunbrella Solid	Velvet - Antique Beige	D	88S	-	*	*		*
90E	Sunbrella Sling	Fairchild	D	90E	PTY	*	*		*
92B	PVC Stripe	Cape Cod Stripe	A	-	WHT	*	*		*
98E	Sunbrella Sling	Calvin Canyon	C	-	-	*	*		*

Crypton Fabrics are also available, see your sales representative or www.woodard-furniture.com for details.

BLK: Black CML: Camel Nvy: Navy PTY: Putty WGR: Wood Green WHT: White
Fabric availability subject to change without notice.

E L E G A N C E I N A N Y S E T T I N G

Woodard

*As a CC Industries Company,
Woodard, LLC is devoted to a tradition
of quality and craftsmanship.*

PO Box 618764, Chicago, IL 60661-8764
Phone: 800.877.2290 Fax: 800.733.4257
www.woodard-furniture.com www.woodard-dealer.com